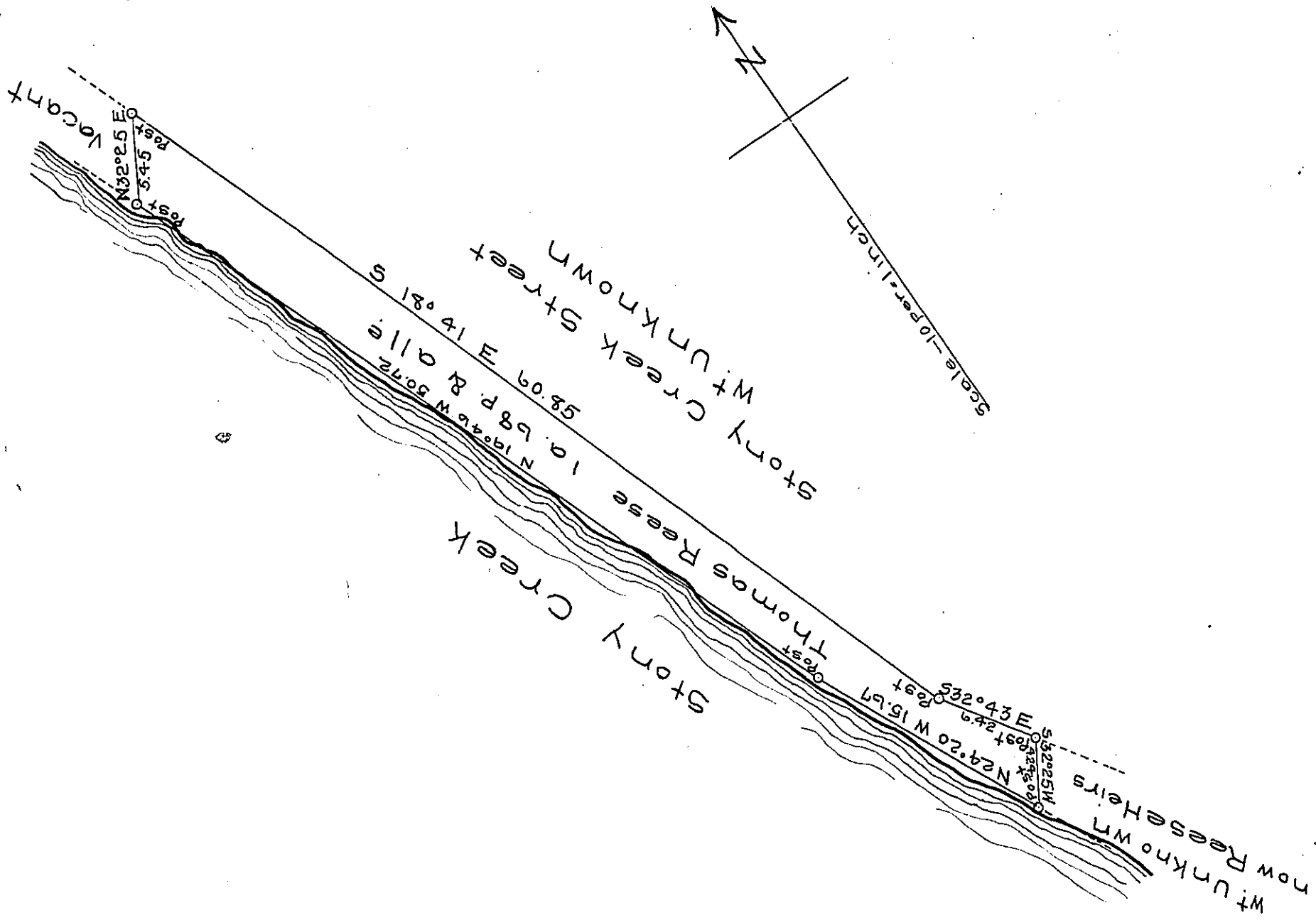


FORM No. 1.



A draft of a tract of land situated in the City ~~township~~ of Johnstown and County of Cambria containing one acre & sixty-eight perches and allowance of six per cent. for roads etc. Surveyed the fourteenth day of July 1897, in pursuance of a warrant granted to Thomas Reese dated the seventh day of July 1897

S.G. Fetterman  
County Surveyor

To James W. Latta Esq.  
Secretary of Internal Affairs

*IN TESTIMONY* that the above is a copy of the original remaining on file in the Department of Internal Affairs of Pennsylvania, made conformably to an Act of Assembly approved the 16th day of February, 1833, I have hereunto set my Hand and caused the Seal of said Department to be affixed at Harrisburg, this twentieth day of September 1906.

*Isaac R. Brown*  
Secretary of Internal Affairs.